



# RUAWAI RAMBLER

A Newsletter for Ruawai and Surrounding Area  
From the Ruawai Promotions and Development Group



December 2017

**Seasons Greetings from Portstar Plastics Ltd.**

**Our Sponsor for this Issue**

## From the Editor

This is the third birthday for the Ruawai Rambler. The first edition came out in December 2014. It had four pages. The last newsletter was twelve pages, so we have really grown. We could not do this without the support from advertisers and special sponsors. Printing a full-colour newsletter does not come cheap. Our sponsor for this edition is Portstar Plastics, so many thanks to James Lucas and his team. And, of course you cannot have a newsletter without news articles, so thank you all those who have contributed over the three years. Keep up the good work. I am still trying to find a sub-editor - see article further on. If you have an article to contribute to the Ruawai Rambler, or want to advertise, please contact the **Editor: Jo (Johannes) Wessel, Phone: 439 2507; email: [jhwessel@xtra.co.nz](mailto:jhwessel@xtra.co.nz)**. The Ruawai Promotions and Development Group Committee has been busy this year. The gazebo is in place - see article below for more information. We are also making good progress with the Cycle/Walkway on the stop bank - see article by Anna Curnow. We are working on other ideas to promote our town. If you have a good idea for Ruawai, please get in touch with RPDG Chairperson, Bruce Crompton or any of our Committee members. From the enclosed programme you can see the dates for our Christmas activities including the Parade on Saturday 16th December.

*On behalf of the Ruawai Promotions Committee I am wishing you all a Merry Christmas and Best Wishes for the New Year.*

## The Gazebo

Most of you will be aware that the gazebo on the Village Green is finished (well not quite; a few finishing touches are needed and the painting needs to be completed). You may have been wondering what we are going to do with it. A few people thought it needed seats inside. The idea however is to make it an attraction for visitors (and locals) by showing some of the history of Ruawai. To do this we are collecting photos about Ruawai. Many come from The Kauri Museum and we are very grateful for their assistance with this project. We also have been getting some photos from locals. If you have any interesting photos, we would love to have a look at them and see if they fit in with our plans. We have quite a few photos of our town in the early days, but not many covering the time from the 1940's to 2000, so we are especially interested in that time period. We are looking for photos of the town and surrounding area. We do not need family photos. So, if you have anything of interest, please get in touch with Jo Wessel (439 2507) or Suzanne Oud (439 2390).

**J.W.**

## Co-Editor required

In the last edition of the Ruawai Rambler, I mentioned the need for a Co-Editor. As I wrote, at some stage I will have to give up being editor of this Newsletter. The mind is still ticking over, so hopefully not for some time, but life can throw some curve balls. So, again I am asking for someone who can initially help with the Rambler and learn about the publishing and eventually take over. It is an interesting job and from the feed-back I get, it is appreciated in the community. You don't have to be a skilled writer. Most of the articles come from other people and just need a bit of editing. As long as you have a computer and basic skills, you can learn the rest, which is what I had to do. For more information, please get in touch with me.

**Jo Wessel, phone 439 2507**



## KCHT HEALTH SHUTTLE

The Health Shuttle will be closed from 22nd December and re-open on 15th January 2018.

To book the Shuttle in January please call Te Ha Oranga on 439 3013 and leave a message on the answer phone.

It has been our pleasure helping the community access health services both locally and in Whangarei.

We appreciate the communities ongoing generous support towards the Health Shuttle.

*We hope you all enjoy a safe and leisurely holiday from the team at the Kaipara Community Health Trust*



### Councillor Curnow's Corner

It has been an interesting year at Council as your new councillors settle in and get to grips with the business of local government. Firstly, let me address the most significant change; Greg Gent stepping down from the role of mayor. Greg is a highly experienced corporate director and so is a real loss to the district. He has chosen to remain private with the details of his reasons, which is his right. It is fair to say that I am disappointed he was not able to stay with us for the full term and will miss his leadership. Greg will remain on the Raupo Drainage Board as a ratepayer representative following the resignation of Hamish Davidson. Deputy Mayor, Peter Wethey has decided to stand at the by-election to be held in February 2108. Following the resignation of Graham Sibery in July, Council appointed Peter Tynan as the Acting Chief Executive. Peter T. has agreed to stay with us until mid 2018 which gives us time to recruit a permanent Chief Executive after the mayoral by-election. This will be important as the Mayor and Chief Executive have to work closely together. Our Long Term Plan 2018-2028 is well underway. The Long Term Plan consultation process includes preparing a "consultation document" which is a summary of the approach Council intends to take over the next 10 years. This document is supported by what are called "source documents" and include things like activity plans, asset management plans, infrastructure plans and rating policies. We are on track to have these all ready for consultation early in 2018 so that the full Long Term Plan can be adopted by the end of June 2018. I hope that you will take the time to review the consultation document and provide your feedback. The LTP is essentially the contract between Council and the community. As with all contracts it is wise to read the detail and make sure it meets your expectations. Please feel free to give me a call if you have any questions about Council: 021 667 124.

***And finally, Merry Christmas!***

**Anna Curnow**

### Stop-bank Trail Update



Our application for funding to Lotteries Community Grants was successful and the real work on the Stop-bank walking and cycle trail can begin! A subcommittee of the Ruawai Promotions and Development Group oversees the project which is expected to begin in late February 2018. The Stop-bank Trail will follow the waterfront, starting from Ruawai Wharf and heading south to the end of Simpson Road –a distance of just under 4km. "Stella Clyde spearheaded the idea over twelve months ago," says RPDG sub-committee Chair, Anna Curnow. "It's exciting to see the project start to come together." The

track will be three metres wide and metalled so that it is suitable for both walkers and cyclists. It connects to public roads to allow users to complete a loop of just under 10km. It is expected that the project will be finished later in 2018 and will be celebrated with an opening and 'fun run walk' event. The committee wants to thank the several local community groups that wrote letters of support to help with the success of the grant application. By way of background; over the past few years the government has invested over \$50 million into NZ Cycle Tracks nationwide, [www.nzcycletrail.com](http://www.nzcycletrail.com). We are hoping that if other local Kaipara communities show some initiative and make a start on walkways in their areas, together we may attract larger scale funding to link up tracks across the district. Other parts of the country have seen significant economic benefits to small local economies from similar projects. The Kaipara District Council would like to develop our district as a walking and cycling destination to support economic growth and they have developed a Walking and Cycling Strategy to achieve this. Kaipara is now being seen as one of the key walking and cycling destinations, especially being within a day trip of a major city population.

**Anna Curnow**

<b>Broken Windows</b> <b>Cat Doors</b> <b>Ranch Slider Rollers</b> <b>Latches and Catches</b> <b>Caravan Windows</b> <b>Rubber Seals</b> <b>Table Tops; Lead-light Repairs</b> <b>Phone Kyle: 021 137 6353</b>	 <b>RIVERSIDE</b> <b>GLASS &amp; GLAZING</b>
---	---

<b>T. GLASS</b> <b>PANELBEATERS</b> since 1984	
<b>Replacement or repair of stonechip windscreens</b>	
<b>5 PORRITT ST.</b> <b>RUAWAI</b>	<b>Ph.Fax.(09)4392416</b> <b>email:tgkumara@yahoo.co.nz</b>



## The Vet Centre Ruawai

[www.thevetcentrenorthland.co.nz](http://www.thevetcentrenorthland.co.nz)

Production and Companion animal veterinary  
services & animal health products

**Proudly servicing the Kaipara and surrounding  
Communities - 24 Hour emergency service**  
23 Jellicoe Road 09 4392506



**We Care:  
Animals People  
Community**



### NorthAble Equipment Meeting

In the September issue of the Ruawai Rambler we announced a demonstration of equipment by NorthAble. This company specialises in products that assist with mobility and safety for people with disabilities from whatever cause. The meeting was sponsored by the Ruawai Promotions and Development Group and was held in the Ruawai Hall. It was well attended and Kaz Howlett, the demonstrator, was an excellent presenter. She gave a lively and very informative demo of the equipment that is available for those with special needs due to age, disease or accident. Some of the products Kaz showed were grabbing sticks to pick up things from the floor without bending down, a gadget to make getting out of a car easier, a tipping kettle for those with weakness in the hands, anti-slip mats for baths and showers and gadgets to make opening jars and bottles easier. There was a display of larger equipment such as walkers and mobility scooters. Kaz also showed us the right height for walking sticks and walkers, which is essential for good posture. We are considering having Kaz back in another 6 months or so for those who missed out this time. So keep an eye out for an announcement, probably in the March/2018 Rambler.

**J.W.**



Kaz had two tables loaded with her products



A few of the people present with Kaz talking

**4 FOUR SQUARE**




**Your friendly local Four Square  
How convenient**

Open from: 7am to 7pm Monday — Friday  
8am to 7pm Saturday


**RUAWAI FOUR SQUARE**  
FREYBERG RD, RUAWAI, PH 09 439 2011



**G & V FINLAYSON LTD**

**Guy Finlayson**  
Certified Plumber

Roofer - Tiler  
6 Bayly Street, Baylys Beach 0377  
Mobile : 021 411 457  
Home : 09 439 0901  
Email : [guyandvikl@xtra.co.nz](mailto:guyandvikl@xtra.co.nz)





## Ruawai Primary School

Puka Class Full Licence (Year 5 and 6)

On Thursday 2<sup>nd</sup> November Tyla, Lucas, Adriana, Chauntelle, Blake, Max and Jodie went on the Enviroschools, Enterprise Expos trip. We visited four sustainable businesses.

1<sup>st</sup> Zephyr Oysters at Paparoa we watched and helped them clean, steam in boiling water, open and pack. Of course we had to try some. Yum Yum!! They also gave us a couple of pots to take.

2<sup>nd</sup> we went to Te Rata Family Farm at Paparoa. They had 12,000 free-range chooks that liked to peck at us, especially our shoes. We were able to collect 6 eggs each to take home, some were very fresh.

3<sup>rd</sup> Chapel Olive Oils. Here we planted some olive trees and saw how they flavoured and bottled the oil. We were able to taste test a variety of flavours.

4<sup>th</sup> Visited an organic dairy that milked 750 cows and they supply Lewis Road Creamery. They had a 60-bale rotary. We learnt about homeopathic animal treatments and organic farming. Here we tasted the very famous Lewis Road chocolate milk. Thanks to all the businesses we visited and Northland Regional Council

Enviro schools team, especially Eden.

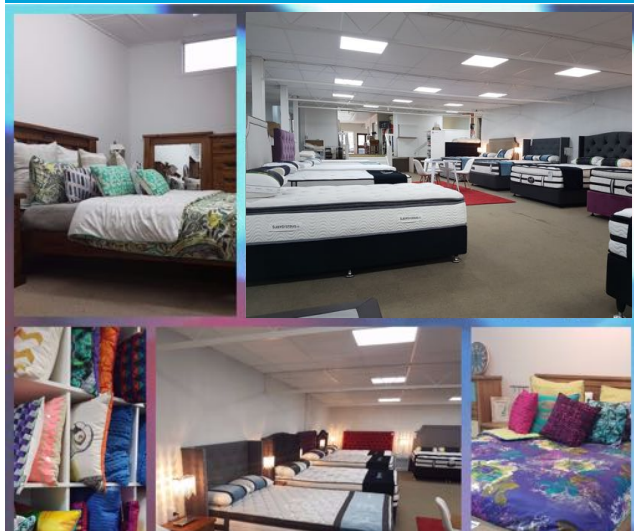
**Adele Slatter**



**NEW SHOW ROOM NOW OPEN!**

**GREAT NEW LOOK IN STORE!**

**PRODUCTS AT GREAT PRICES!**



A: 18-22 FREYBERG ROAD, RUAWAI | PH: 09 439 2243 | FB: @BEDSNMOREOUTLETSTORE



**IN STOCK NOW!**



**PALM KERNEL TRAILERS**



**LEVELLERS**



**ROLLERS**

View our website: [www.cromptonengineering.co.nz](http://www.cromptonengineering.co.nz)

**CROMPTON**  
ENGINEERING



31 Jellicoe St, Ruawai • Ph 09 439 2393

## Ruawai Bowling Club

Ruawai Bowling Club committee and members wish everyone a Merry Christmas and a Happy and safe New Year. Just a reminder that the kitchen is open on a Friday night, run by the Well Café staff with a great selection of meals, at reasonable prices, from 6:00pm. Any prospective social and playing (new or experienced) members are more than welcome to join the club. We are open most days from 4:30pm until whenever.

**Linda Sheehan**



MERRY CHRISTMAS TO OUR  
WONDERFUL COMMUNITY FROM ALL OF  
US HERE AT RUAWAI KINDERGARTEN.

LAST DAY OF KINDY FOR 2017:  
WEDNESDAY 20<sup>TH</sup> DECEMBER.

FIRST DAY FOR 2018: WEDNESDAY 24<sup>TH</sup>  
JANUARY.



"The only way to do great  
work, is to love what you do".

And we **love** what we do... phone The Collective today.

**Catherine Stewart**

Rural Specialist

0800 422 959

catherine.stewart@bayleys.co.nz

MACKYS REAL ESTATE LIMITED, BAYLEYS  
LICENSED UNDER THE REA ACT 2008

**Lisa Pocklington**

Lifestyle and Residential Specialist

021 121 8419

lisa.pocklington@bayleys.co.nz

MACKYS REAL ESTATE LIMITED, BAYLEYS  
LICENSED UNDER THE REA ACT 2008

**Tinelle Langdon**

Client Services Manager

021 143 1183

tinelle.langdon@bayleys.co.nz

MACKYS REAL ESTATE LIMITED, BAYLEYS  
LICENSED UNDER THE REA ACT 2008

The Collective

**BAYLEYS**



### Bikes in Schools Project Update

On Saturday 11 November we finally turned soil to commence the creation of the first bike track at Ruawai Primary School. Previously put off by terrible weather conditions, this was a highly anticipated step in our dream to make Bikes in Schools a reality for our school and community. The track looks great and is a wonderful addition to our facilities and we encourage you to take advantage of it outside of school hours! I would like to acknowledge once again the overwhelming support we have received from the community. A special mention goes to Natalie Davidson who is no longer with us, but was a driving force behind this project. Natalie is rapped to see our progress. To our volunteers, Keith and Adele Slatter, Curtis Gaylor, Cole and Alana Ringrose, Craig Mitchell, Tim Johnson and Glen Jenyns and to those that popped in to lend a hand throughout the weekend, we thank you. Thanks also to Ringrose Construction, Ruawai Transport, Ruawai Fire Brigade, Jenyns & Jenyns, Jenyns Contracting, ACE Rentals, and Glen Jenyns Excavators. We also acknowledge the NZ Lotteries Commission for awarding us a grant that has allowed us to get to this point.

The next phase of the project is to build a BMX style pump track and we are still in the process of seeking funding for a storage facility for our bikes. If you or your business would like to support us please phone me on 021 439 575. In the meantime we will keep you up to date with any developments. We intend to hold a community open day in the new year. For now our learners are loving exploring the new track; and the excitement of the new fleet of bikes arriving is building!

**Kim Jenyns**



### **Ruawai Primary School Discovery Time**

Our three junior classes loved sharing their play-based 'Discovery Time' with whānau and visitors during the recent Calf Club Day. Our learners love the Thursday morning sessions where they regularly participate in a wide range of experiences based on their interests and passions. We have focused on the skills of sharing, communicating, negotiating and working as part of a team as they play and learn together.

We welcome any visitors who would like to come along and join us at our 'Discovery Time' each Thursday morning 9.00-11.00. Thank you, The Junior Team.

**Serah Mehrstens**




# **RUAWAI**

**COME SEE YOUR AWESOME RD1 TEAM FOR ALL YOUR FARMING NEEDS**

We are the best farming store in town with the total package

- Great service
- Deliveries
- Dairy shed supplies
- Stock feed and nutrition
- Pasture and cropping advice
- Chin wag and coffee specialists




(09) 439 2244  
OPEN: MON-FRI 8-5 SAT 9-1  
CLOSED PUBLIC HOLIDAYS



*St Mary's Catholic Church*

## **Christmas Eve Service**

*24 Dec 2017*

Join us for Carols at 5pm  
followed by Christmas Mass

*Take a little time-out to rest from the  
rush and refresh your spirit*

**All welcome!**





### **Celebrating Christmas at Totara House**

For a limited time, The Kauri Museum is inviting visitors to take a break from the silly season and explore the festivities on offer at Totara House. From 4 December to 17 December, Totara House in Wharf Road, normally open only by appointment, will open daily to the public between 10am-2pm. The Friends of the Kauri Museum have been crafting traditional and non-traditional Christmas Decorations and the halls of Totara House will be decked out in all its finery, ably assisted by the students of Matakohē, Paparoa, Ruawai and Tinopai Schools. The family of George and Emily Smith celebrated Christmas for 117 years between these magnificent kauri walls as well as within the sprawling heritage gardens that surround the house. CEO Lisa Tolich says that Totara house, with its unique collection of family heirlooms and stories, comes alive when visitors arrive and this special Christmas edition will not disappoint. Admission proceeds and donations will go to Totara House Preservation fund to maintain and provide access to the Heritage 2 listed building. "We are always on the lookout for opportunities for the house to be made more accessible to the daily visitors who travel to The Kauri Museum as well as the locals who have grown to love it," she says.

“Just like your modern, everyday home, Totara House is a living entity and will only deteriorate with lack of use.” Tickets are available from the Museum (standard payment methods) and Totara House (cash only) at the discounted Christmas special rate of \$8 per person, with children under 16 years of age free of charge. A special late night opening from 5pm-8pm will be on offer on Friday 8<sup>th</sup> December for those who are unable to visit during the day. For more information phone 09 431 7417 or visit [www.kaurimuseum.com](http://www.kaurimuseum.com)



## FUELING YOUR SAVINGS!

UP TO  
**8¢**  
 OFF  
per litre

Challenge is the only fully owned and operated Kiwi service station network supported by SuperGold. That's why when you fill up at your local Challenge station, you'll save up to **8 cents per litre** on fuel!

Visit Challenge Ruawai your friendly one stop shop for all your motoring and convenience needs.

**Ruawai Motors**  
 Jellicoe Road, Ruawai  
 Open 7 days, 7.00am – 7.00pm

CHALLENGE

[www.challenge.net.nz](http://www.challenge.net.nz)

## Purity Beauty & Massage Ruawai

### Eye Treatments

- Eye brow shape **\$15**
- Eye brow shape & tint **\$20**
- Eye lash tint **\$20**
- Eye brow shape, lash & brow tint **\$25**

### Massage Treatments

- 30 min - Back, neck & shoulder **\$30**
- 1 hr - Full body relaxation **\$60**
- 1 ½ hrs - Full body, head-toe **\$90**
- 1 hr - deep tissue **\$80**
- 1 hr - Hot stone **\$80**
- 45 mins - Back rub & scrub **\$45**

### Treat yourself...

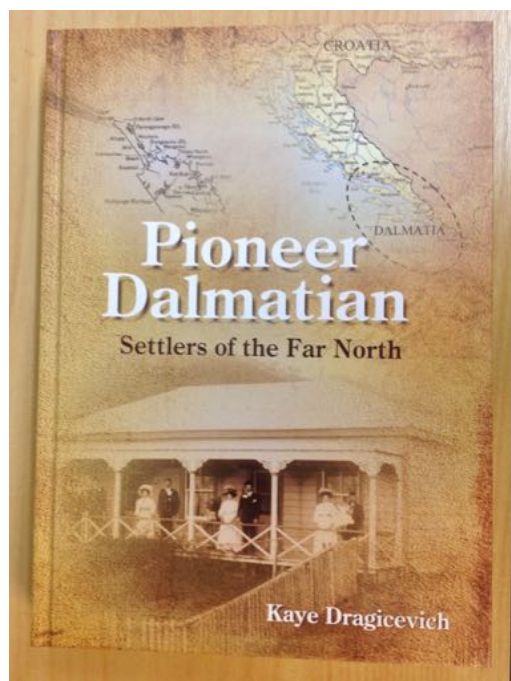
### Facials

- Mini Purity Facial** – Cleanse, tone, exfoliate, mask, head massage & hydrate **\$45**
- Deluxe Purity Facial** – Treat your skin to a deep cleanse, exfoliate, enzyme peeling mask, brow tidy & face massage using vitamin C serum **\$80**

### ALL natural products

– no chemicals, parabens or artificial ingredients

By appointment only call Diane **0212930542** or **094392003**



### New Book

The book 'Pioneer Dalmatian' will be of special interest to those of Dalmatian descent. Kaye Dragicevich has collected 200 stories of pioneering families who came from Croatia. The book includes 900 historical photos. It will make a great Christmas present and is available at The Kauri Museum shop. **J.W**





Anthony Martinovich  
**Ruawai Tyre Service**  
 33 Jellicoe Road  
 p. 4392 492  
*Service you can trust*

**NORTH KAIPARA  
 GARAGE DOORS**  
 SALES / SERVICE / REPAIRS  
 ON ALL TYPES OF DOORS AND  
 AUTOMATIC OPENERS  
**DON SIMPSON**  
 Ph/Fax: 09 439 2292  
 Mobile: 021-607-952

### The Art Studio Ruawai News

Another busy term for the Art Studio is rapidly coming to a close. All those who have attended workshops have really enjoyed them, not only for the knowledge gained, but also for the chance to try new techniques and then continue to experiment with them.

One hour exercises using three primary colours only, plus white, have also been beneficial and are ongoing. Silence has been golden for these one-hour periods, while people concentrate on completing a painting in



this time. Taxing but fun. Some of our members recently entered the Trash to Art competition held in Paparoa and organised by White Rock Gallery. Frances Casey won the Sculpture section with her entry "Board with Ironing Trash It". Also in this section, Suzanne Harrison won a Merit Award for "Mr P the Peacock". Tatiana White won the Trash to Art section. This day was very successful and it is hoped it will become an annual event. Our last day at the studio for the year will be 13th of December and we will commence again next year on Wednesday 7th of February. Seasons Greetings to all Ruawai Rambler readers from the Art Studio. **We wish you a very Merry Christmas and a Safe and Happy New Year.**



Mon-Sat 9am-5pm  
**The Corner Place**  
 Garden Centre, Ruawai  
 13 Jellicoe Rd, Ruawai ph 09 439 2215  
 cornerplacegardencentre.weebly.com  
 EFT-POS available



**The Well Cafe**  
 Open Hours  
 Monday to Saturday 7am - 4pm  
 23 Freyberg Road, Ruawai  
 P: 09 4392 703

### Ruawai Garden Club Doings

Hi to all you gardeners out there. Doesn't the weather make our life difficult? We go from gardens that have been soaked with rain, and in a couple of weeks it feels like we are digging rocks. Woeee !

Anyway to keep you all up to date, the Garden Club held their annual Rose Show on Saturday 11th Nov. We had a good attendance again with nearly everyone partaking in a lovely (very filling) lunch. The roses were beautiful; some of them so big I am not sure what they are feeding them on. As usual we had a lot of windy weather prior to the show which obviously ruined some roses. But we still had plenty. Thanks to all the garden club members who work so hard on this day. This year the Champion Bloom was won by Dorothy Simpson. On Thursday 16th Nov. we were off and away again on a day trip. This time we went to the cafe and gallery at Helena Bay, on the east coast, and we had a pretty full bus load. We had a delicious lunch and, from all reports, truly delicious cakes for dessert. Coffee was so yum too. Between lunch & dessert we all went into the gallery to check out the beautiful pieces they have for sale in there. I spoke to one of the sales assistants and she said they have over 100 artists contributing their work to the gallery. Some of it was stunning. Expensive of course, particularly the large items. There was probably too much to see in the time we had. I think it is worth a day trip over there & give yourself time to view the gallery fully, stroll around the little lake, & check out all the big items placed round their garden. Oh, and views of the coast & the sea from

the deck area where we had our lunch, magnificent. **Have a wonderful Christmas & New Year.** Talk to you next year. Happy weeding all.  
**Merle Jackson**



### **Ruawai College Swimming Pool**

The Ruawai College swimming pool will be open for the 2017 / 2018 summer season. The season starts Wednesday 15 November, 3:15pm. Keys are on sale from the school office Wednesday 15 November. The levy this year shall be \$75.00 for a school family and \$85.00 for community members. When keys are returned at the end of the season a \$5.00 cash bond will be returned. Keys will not be sold to any persons under the age of 18 and you must complete a Swimming Pool Use Code and Agreement available at the school office.

### **Ruawai Primary School Swimming Pool**

Keys for the Pool are available at the school office for \$35

## **Books @ Ruawai**

secondhand books/music

**Now Open**

**Monday - Wednesday: 9.30am - 11.30 am**

**Thursday - Friday: 2 pm - 4pm**

**Weekends: December 16**

**Closed Dec. 25 - Jan.3**

**And other times by request.**

**For opening weekends check Lifestyler**

**Phone: 027 200 5653**

**022 073 9752**

**Shop phone: 439 2044**



## **142<sup>nd</sup> PAPAROA A&P SHOW –Saturday 3 February 2018**

Schedules and entry forms available online [www.paparoashow.org.nz](http://www.paparoashow.org.nz) and Farm Source (RD1) Ruawai

### **CalfClub Day 2017**

The annual Calf Club day was held at the Ruawai Primary School on October 27th. The highlight was, of course, the students showing their calves and lambs. With the reduction in our rural population, the number of animals was not what it used to be, but there was still a respectable turnout and the enthusiasm was certainly there. As well as the calves and lambs, many students had entered other exhibits. In the Baking Competition section there were tables loaded with delicious cakes, biscuits etc. I found the "Upcycled Inventions" particularly interesting. The students had taken various materials, eg. empty cereal boxes, drink cans, electronic wiring etc. and made exhibits such as robots, a house, a dinner plate etc. And of course there was food available. The stall selling sausages, mussel fritters and drinks did a great business as did the

inside cafe which sold cakes, muffins, tea, coffee etc. Tables and chairs were put around and set the mood to relax with a cuppa' A lot of the work was done by the students and they did a great job. Following are a few photos of the day.

**J.W.**





**RUAWAI**  
AUTO SERVICES

To all my customers  
Have a great Xmas & a Happy New Year

For all things automotive  
See the best in town!

**CALL US NOW!**  
**09 439 2424**  
 23 Freyberg St, Ruawai

Closed 17th December 2014  
 Open 12th January 2015

**DIESEL TUNING CHIPS**  
**AVAILABLE HERE NOW -**  
**FOR TRUCKS, UTES,**  
**TRACTORS AND MORE!**

**P & T CONTRACTORS RUAWAI LTD**

Phone 021 804 874

[crew@vodafone.co.nz](mailto:crew@vodafone.co.nz)

Facebook page: P & T Contractors Ltd

Disking  
 Powerharrowing  
 Effluent Spreading  
 Spraying



# Ruawai Promotions and Development Group

## Christmas Programme



### Float Parade 16th December 2017

Festivities commence 10.00am outside Four Square

Float Parade leaves Community Church at 11.00am

Santa, Quick Fire Raffles, Sausage Sizzle, Stalls, Christmas Music

Prize for best floats - Monster Xmas Hamper to be drawn on the day

Further info regarding Parade Phone Elaine 4392221

### WATCH THE NOTICE BOARD ON THE VILLAGE GREEN FOR UPDATES ON CHRISTMAS ACTIVITIES

#### Best Business Christmas Window

Go along and see what decorations are in our local shop windows

### NIGHT ON THE VILLAGE GREEN

13<sup>TH</sup> December 5.30pm onwards

Quick Fire Raffles. Sausage Sizzle, Santa

### COME DOWN AND JOIN IN WITH US SINGING CHRISTMAS CAROLS

Fun night. Whether you enjoy singing or just listening, there will be all sorts of Christmas songs

### PHOTOS WITH SANTA

Have your Photo taken with Santa at The Gazebo on the village green for a Gold coin donation  
Photos available next day

WATCH THE NOTICE BOARD FOR DAYS AND TIMES

**Opening Times 11.00 am- 2.30pm**



## Christmas Light Display



Come along and see the best display of Christmas lights that you have ever seen in Ruawai

Each year The Lyndseys put up a fantastic display for anyone to go along to look at.

This well and truly rivals anything you would ever see in the big cities

Make sure you get in early, don't wait until it's raining.

Available to view in December on Wallace Road

---

### **Ruawai Promotions and Development Christmas Raffle**

Cut off and Win a Hamper Full of Christmas Goodies!!!!!!!

Place in Entry Boxes at, Ruawai Post Centre, R.D.1 and Four Square

Drawn 16th December at the Christmas Parade

**\$5.00 Ticket**

**Name** \_\_\_\_\_ **Contact Phone Number** \_\_\_\_\_

N

---

---

### **Ruawai Promotions and Development Christmas Raffle**

Cut off and Win a Hamper Full of Christmas Goodies!!!!!!!

Place in Entry Boxes at, Ruawai Post Centre, R.D.1 and Four Square

Drawn 16th December at the Christmas Parade

**\$5.00 Ticket**

**Name** \_\_\_\_\_ **Contact Phone Number** \_\_\_\_\_